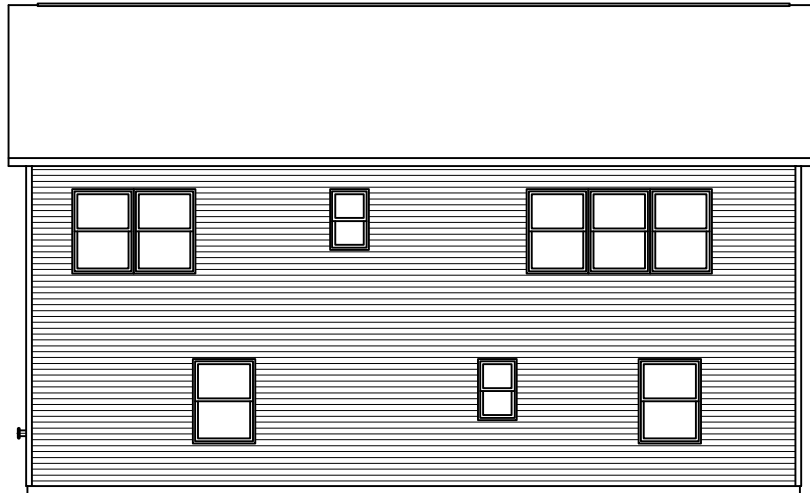


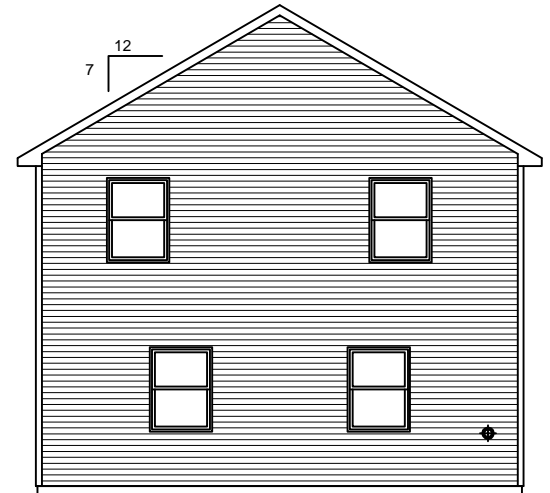
LEFT SIDE ELEVATION

SCALE: 1/8"= 1'-0"



REAR ELEVATION

SCALE: 1/8"= 1'-0"



RIGHT SIDE ELEVATION

SCALE: 1/8"= 1'-0"

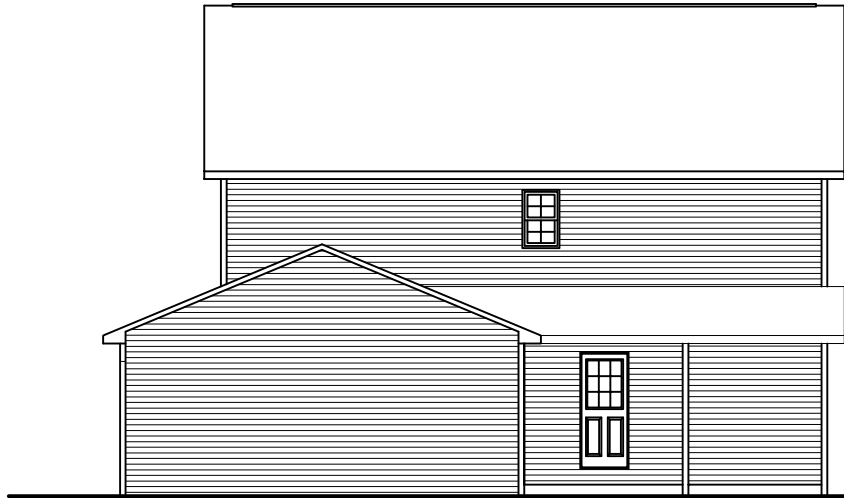
SOME ITEMS DEPICTED IN THESE DRAWINGS
MAY BE OPTIONAL. PLEASE SEE SALES ORDER
FOR EXTENT OF MATERIAL PROVIDED.



681

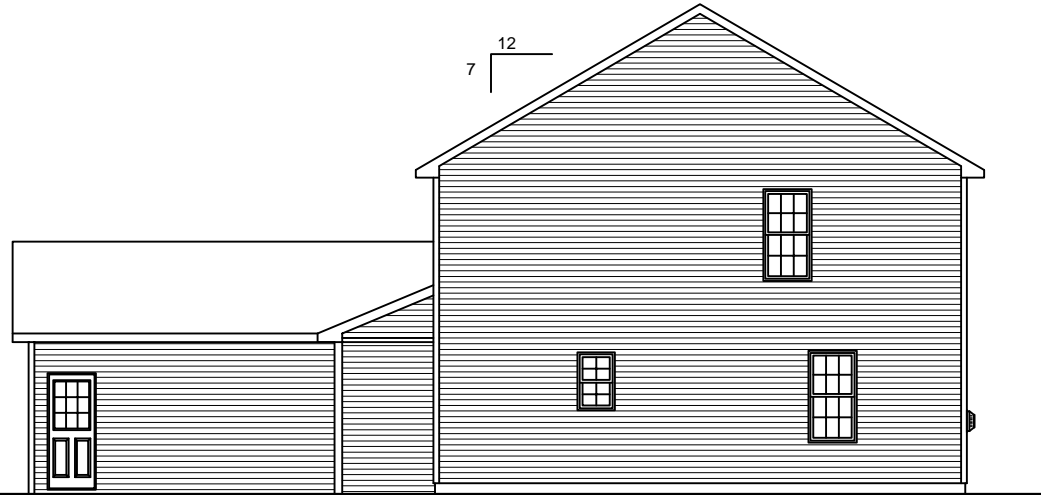
FRONT ELEVATION

SCALE: 3/16"= 1'-0"



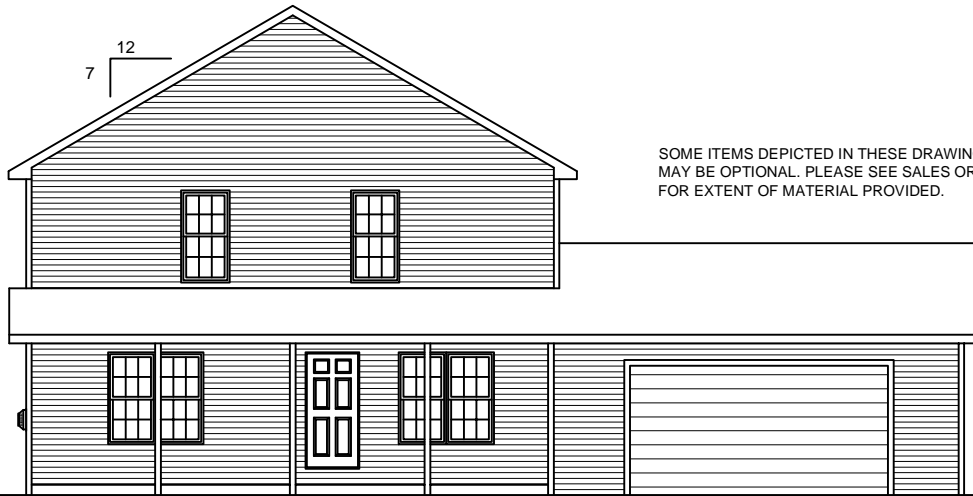
LEFT ELEVATION

SCALE: 3/32"= 1'-0"



REAR ELEVATION

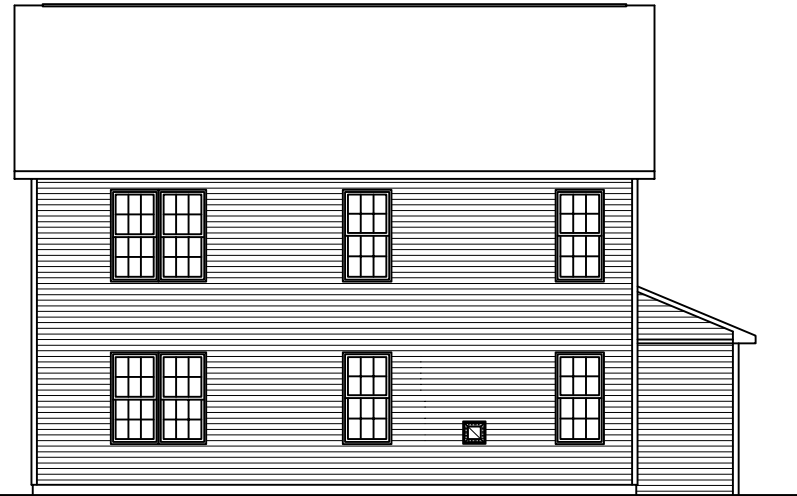
SCALE: 3/32"= 1'-0"



FRONT ELEVATION

SCALE: 3/32"= 1'-0"

SOME ITEMS DEPICTED IN THESE DRAWINGS
MAY BE OPTIONAL. PLEASE SEE SALES ORDER
FOR EXTENT OF MATERIAL PROVIDED.



RIGHT ELEVATION

SCALE: 3/32"= 1'-0"

1023

