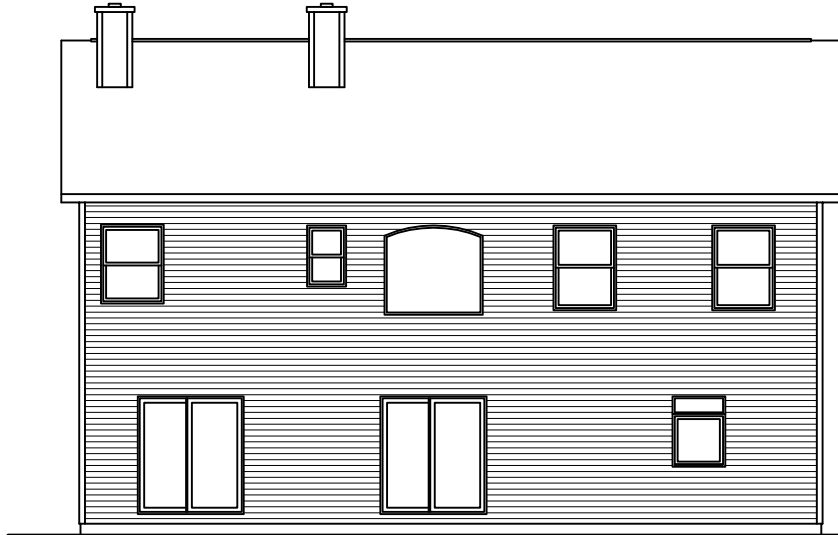




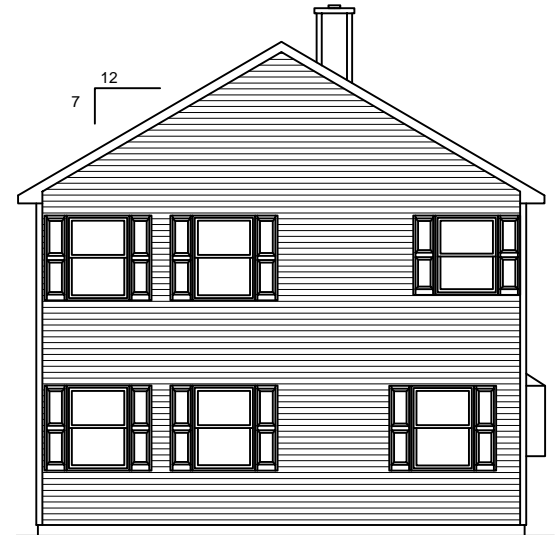
**LEFT SIDE ELEVATION**

SCALE: 1/8" = 1'-0"



**REAR ELEVATION**

SCALE: 1/8" = 1'-0"



**RIGHT SIDE ELEVATION**

SCALE: 1/8" = 1'-0"

SOME ITEMS DEPICTED IN THESE DRAWINGS  
MAY BE OPTIONAL. PLEASE SEE SALES ORDER  
FOR EXTENT OF MATERIAL PROVIDED.



**FRONT ELEVATION**

SCALE: 3/16" = 1'-0"

