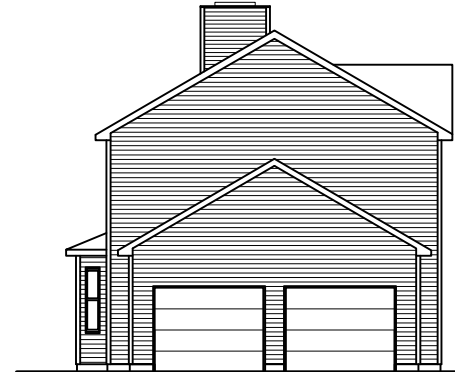




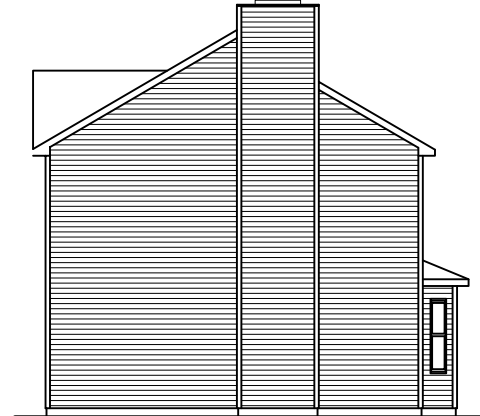
**REAR ELEVATION**

SCALE: 3/32" = 1'-0"



**LEFT ELEVATION**

SCALE: 3/32" = 1'-0"



**RIGHT ELEVATION**

SCALE: 3/32" = 1'-0"

SOME ITEMS DEPICTED IN THESE DRAWINGS  
MAY BE OPTIONAL. PLEASE SEE SALES ORDER  
FOR EXTENT OF MATERIAL PROVIDED.



1008

**FRONT ELEVATION**

SCALE: 1/8" = 1'-0"

