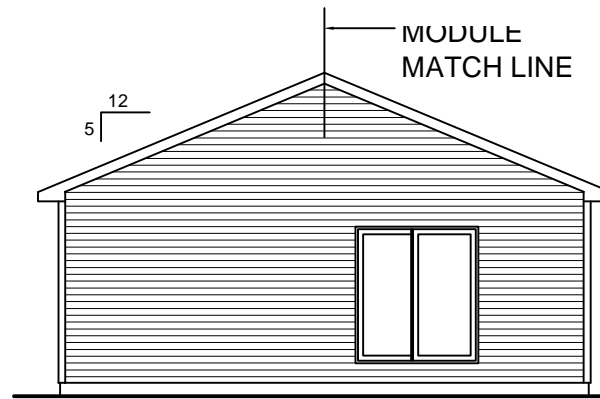




**LEFT SIDE ELEVATION**

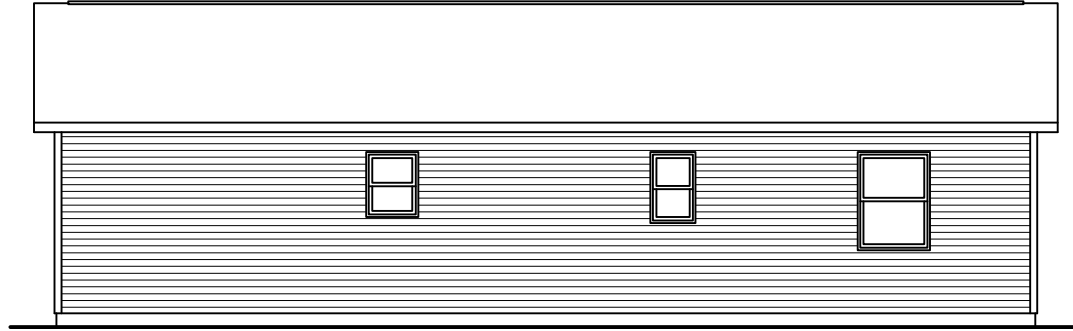
SCALE: 1/8"= 1'-0"



**RIGHT SIDE ELEVATION**

SCALE: 1/8"= 1'-0"

SOME ITEMS DEPICTED IN THESE DRAWINGS  
MAY BE OPTIONAL. PLEASE SEE SALES ORDER  
FOR EXTENT OF MATERIAL PROVIDED.



**REAR ELEVATION**

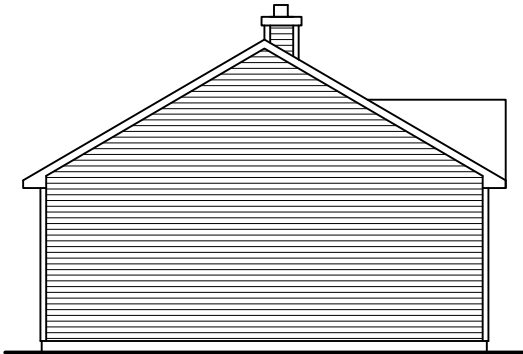
SCALE: 1/8"= 1'-0"



**FRONT ELEVATION**

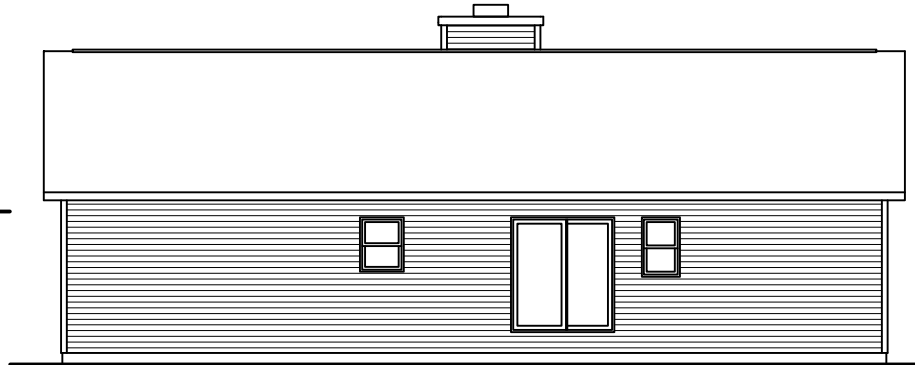
SCALE: 3/16"= 1'-0"





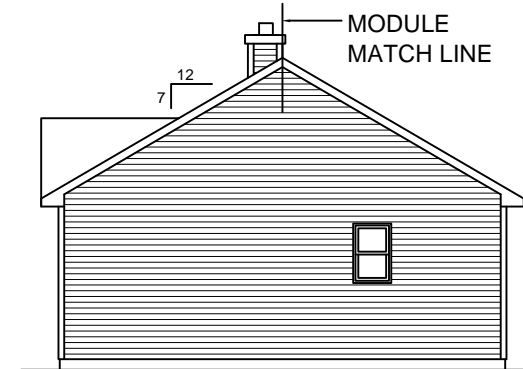
**LEFT SIDE ELEVATION**

SCALE: 1/8" = 1'-0"



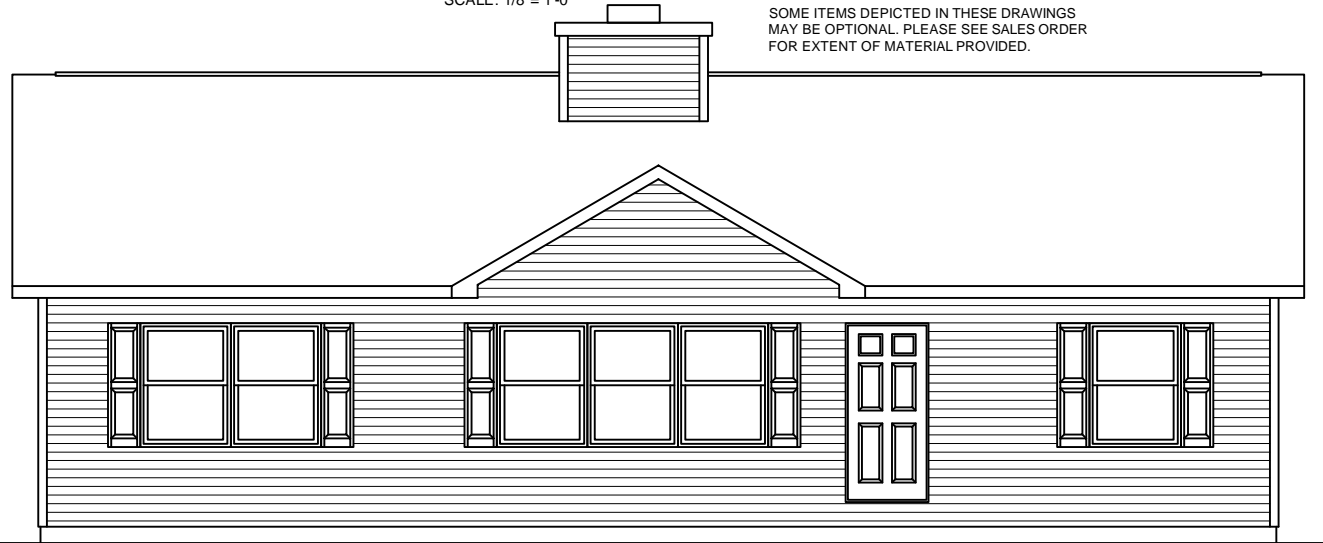
**REAR ELEVATION**

SCALE: 1/8" = 1'-0"



**RIGHT SIDE ELEVATION**

SCALE: 1/8" = 1'-0"



806

**FRONT ELEVATION**

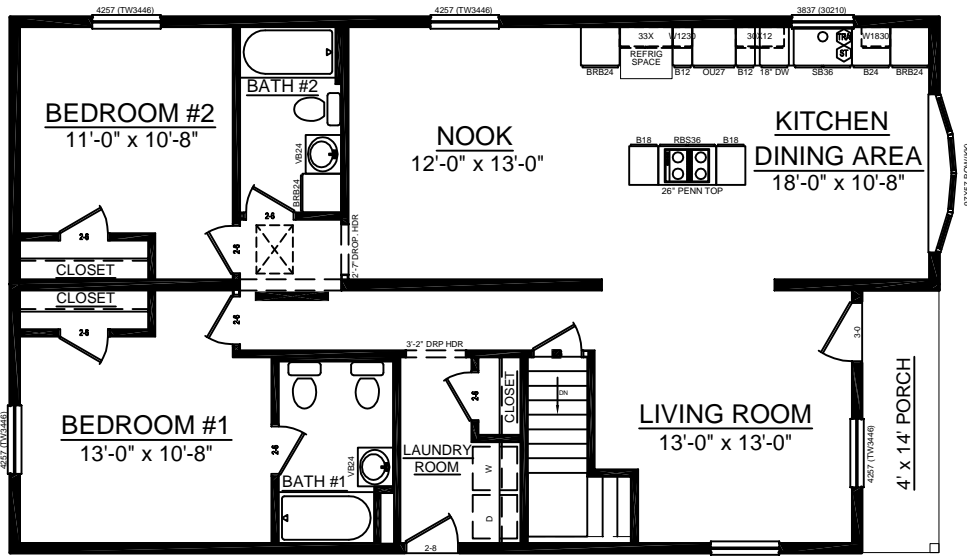
SCALE: 3/16" = 1'-0"

SOME ITEMS DEPICTED IN THESE DRAWINGS  
MAY BE OPTIONAL. PLEASE SEE SALES ORDER  
FOR EXTENT OF MATERIAL PROVIDED.





**FRONT ELEVATION**



**FLOOR PLAN**



**REAR ELEVATION**



**LEFT ELEVATION**



**RIGHT ELEVATION**

# CUSTOM RANCH - 28 x 48

SOME ITEMS DEPICTED IN THESE DRAWINGS MAY BE OPTIONAL. PLEASE SEE SALES ORDER FOR EXTENT OF MATERIAL PROVIDED.

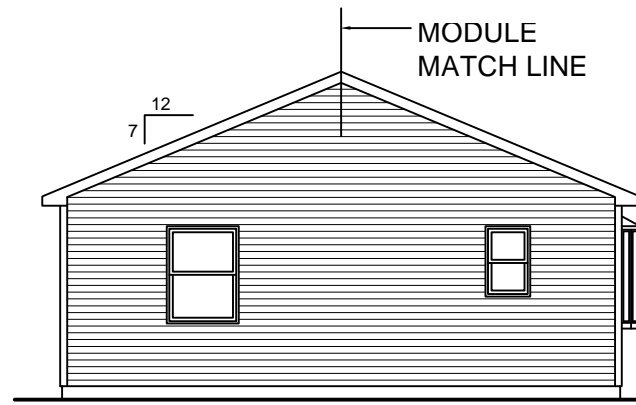
**BILL LAKE MODULAR HOMES**  
 188 FLANDERS ROAD  
 SPRAKERS, NY 12166  
 (518) 673 - 2424





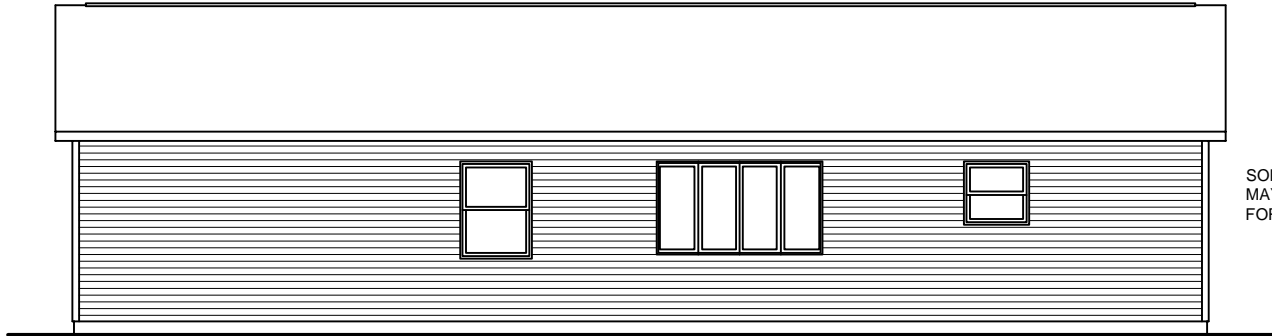
**LEFT SIDE ELEVATION**

SCALE: 1/8"= 1'-0"



**RIGHT SIDE ELEVATION**

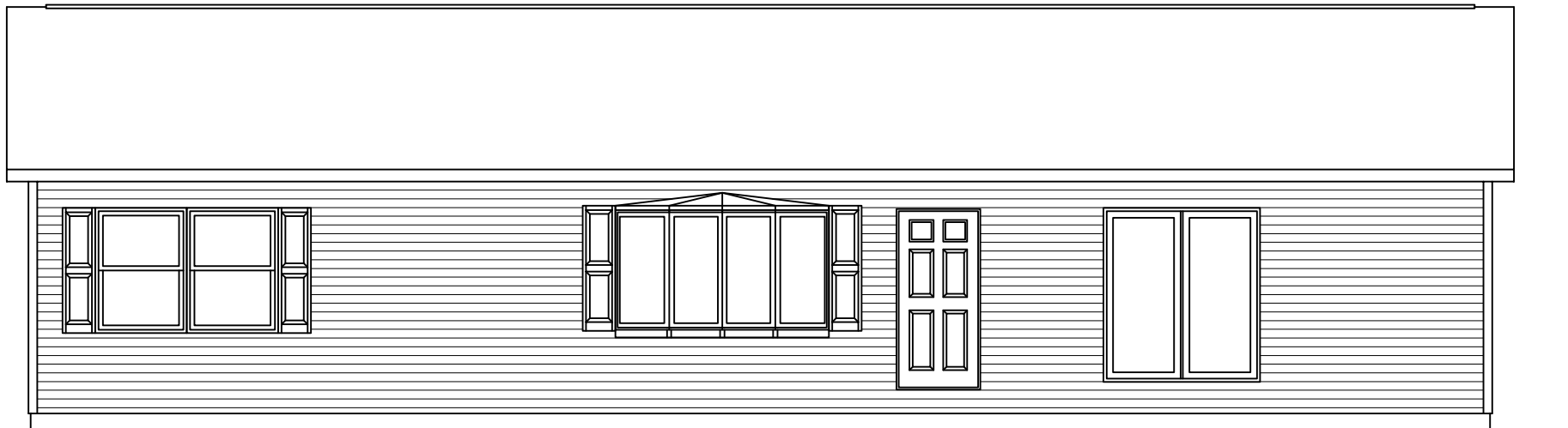
SCALE: 1/8"= 1'-0"



**REAR ELEVATION**

SCALE: 1/8"= 1'-0"

SOME ITEMS DEPICTED IN THESE DRAWINGS  
MAY BE OPTIONAL. PLEASE SEE SALES ORDER  
FOR EXTENT OF MATERIAL PROVIDED.



**FRONT ELEVATION**

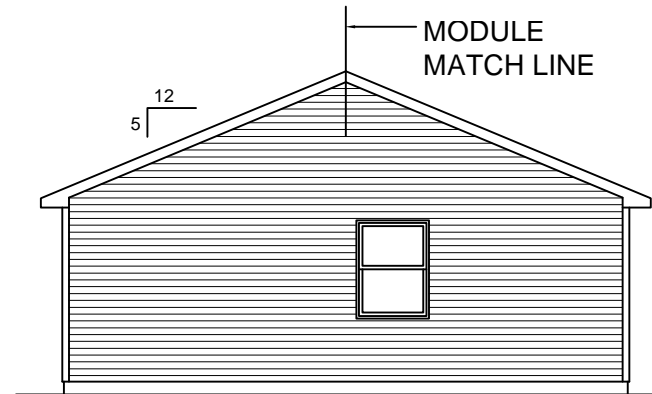
SCALE: 3/16"= 1'-0"





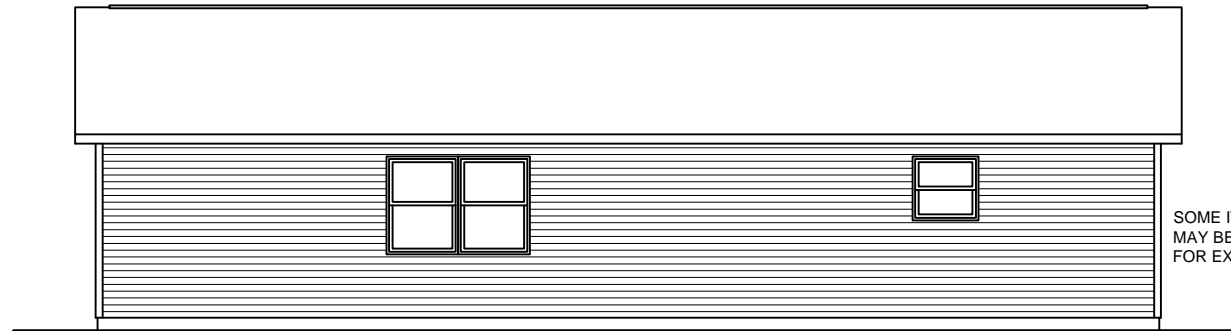
**LEFT SIDE ELEVATION**

SCALE: 1/8"= 1'-0"



**RIGHT SIDE ELEVATION**

SCALE: 1/8"= 1'-0"



**REAR ELEVATION**

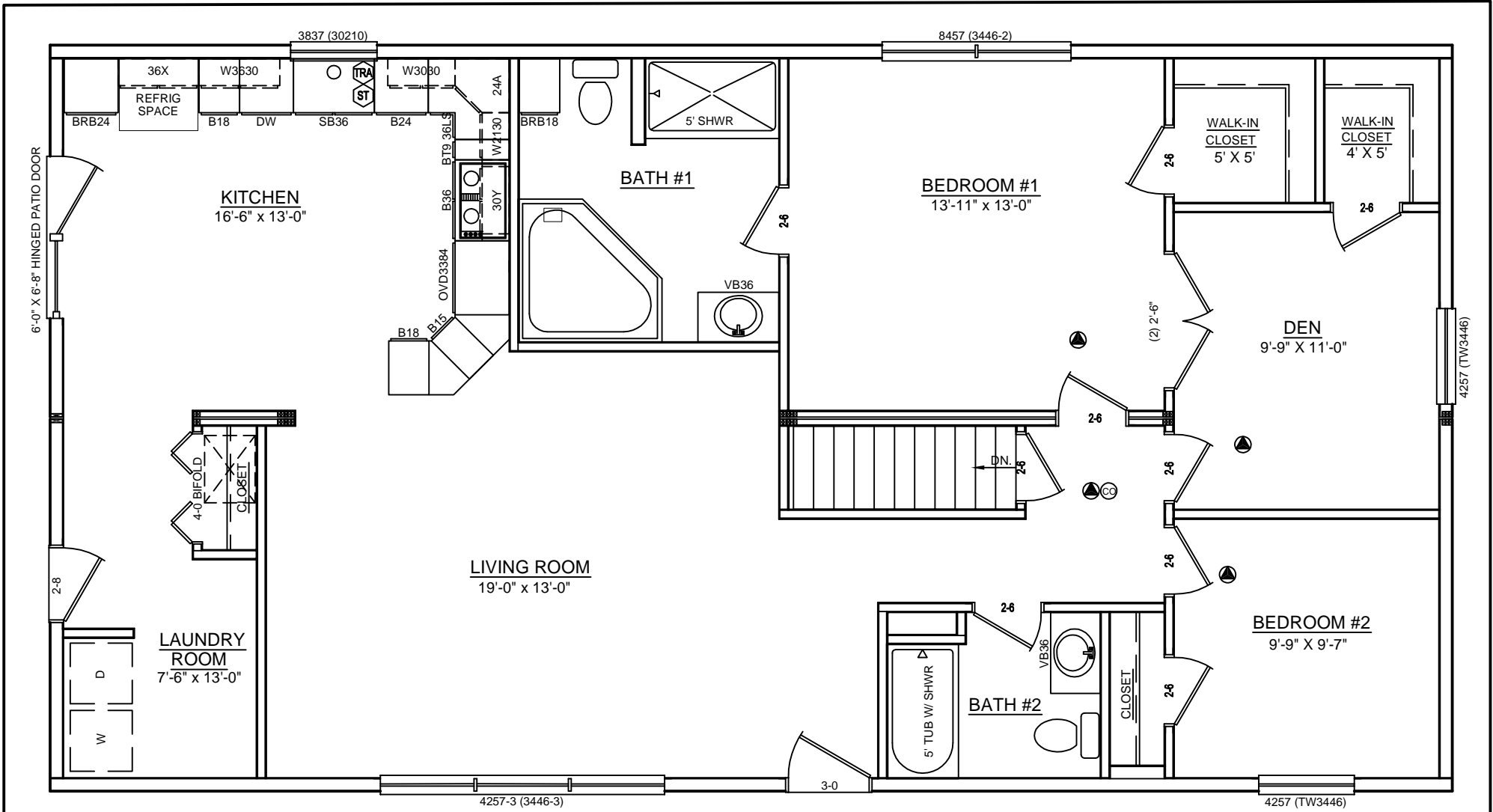
SCALE: 1/8"= 1'-0"

SOME ITEMS DEPICTED IN THESE DRAWINGS  
MAY BE OPTIONAL. PLEASE SEE SALES ORDER  
FOR EXTENT OF MATERIAL PROVIDED.



**FRONT ELEVATION**

SCALE: 3/16"= 1'-0"

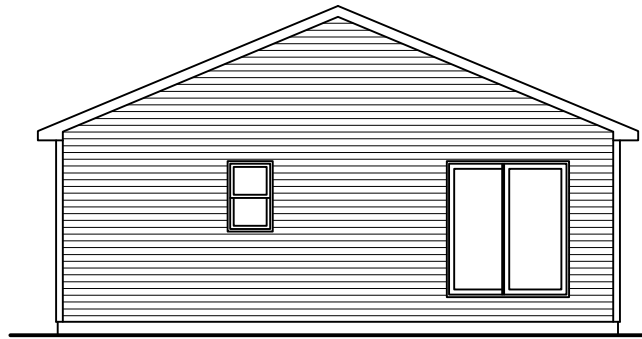


# CUSTOM RANCH - 28 x 52

SOME ITEMS DEPICTED IN THESE DRAWINGS MAY BE OPTIONAL. PLEASE SEE SALES ORDER FOR EXTENT OF MATERIAL PROVIDED.

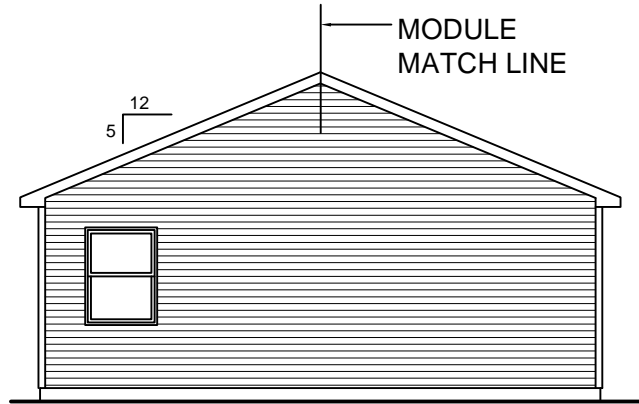
**BILL LAKE MODULAR HOMES**  
 188 FLANDERS ROAD  
 SPRAKERS, NY 12166  
 (518) 673 - 2424





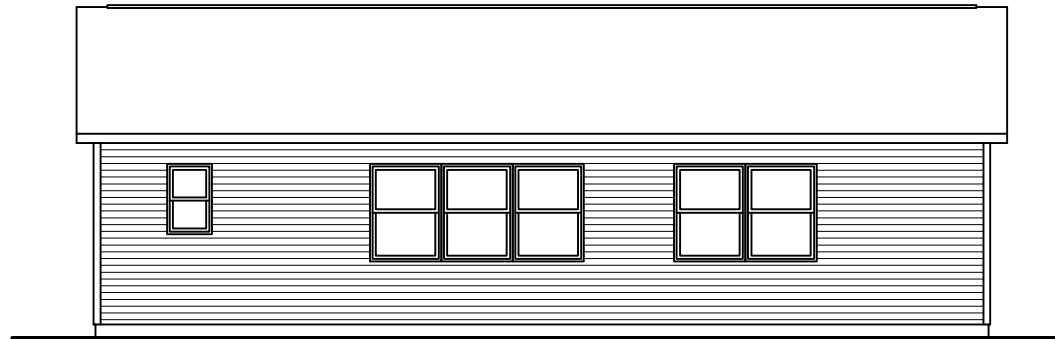
**LEFT SIDE ELEVATION**

SCALE: 1/8" = 1'-0"



**RIGHT SIDE ELEVATION**

SCALE: 1/8" = 1'-0"

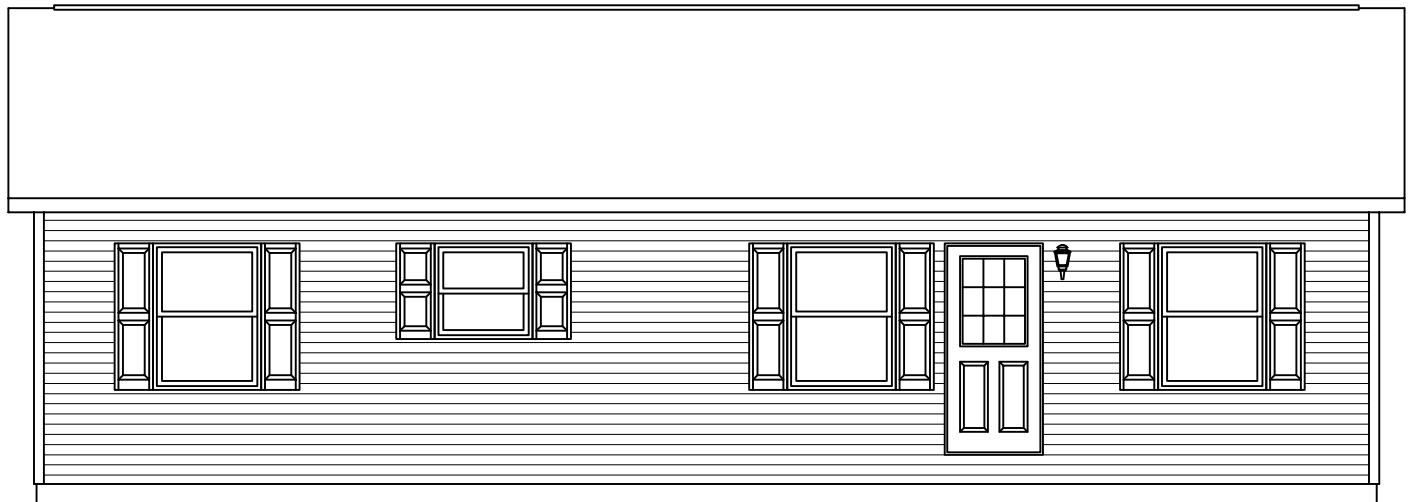


**REAR ELEVATION**

SCALE: 1/8" = 1'-0"

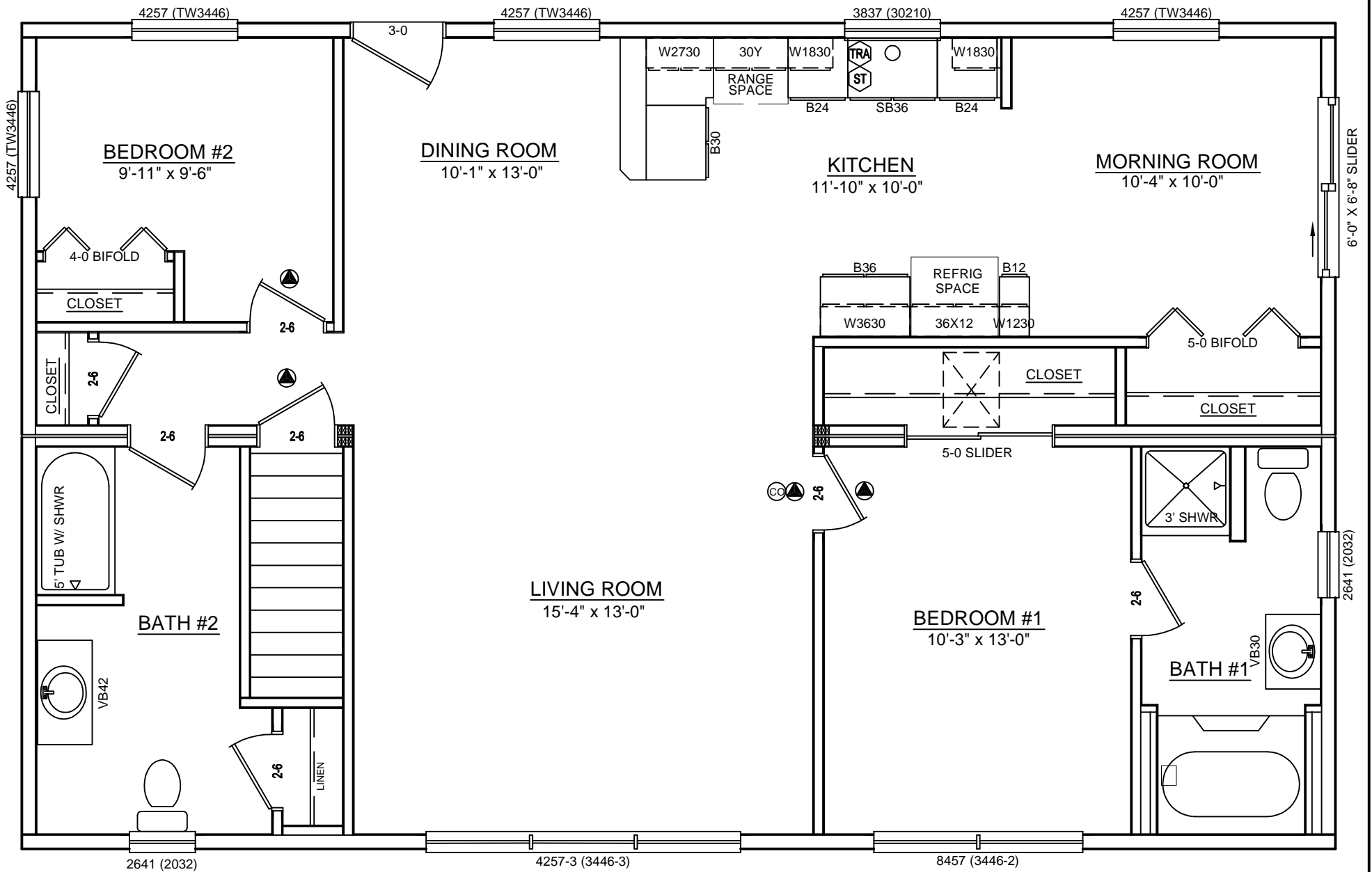
FRONT ELEVATION

SOME ITEMS DEPICTED IN THESE DRAWINGS  
MAY BE OPTIONAL. PLEASE SEE SALES ORDER  
FOR EXTENT OF MATERIAL PROVIDED.



**FRONT ELEVATION**

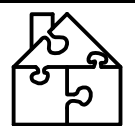
SCALE: 3/16" = 1'-0"

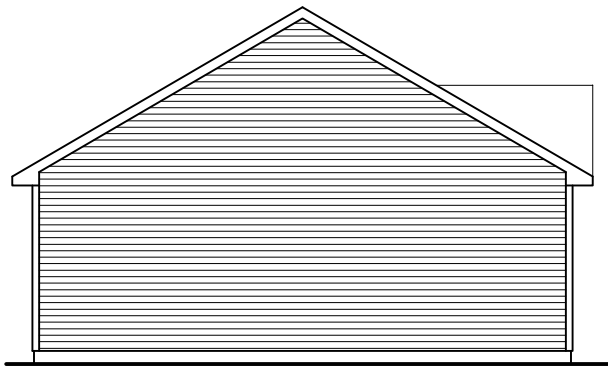


# CUSTOM RANCH - 28 x 44

SOME ITEMS DEPICTED IN THESE DRAWINGS MAY BE OPTIONAL. PLEASE SEE SALES ORDER FOR EXTENT OF MATERIAL PROVIDED.

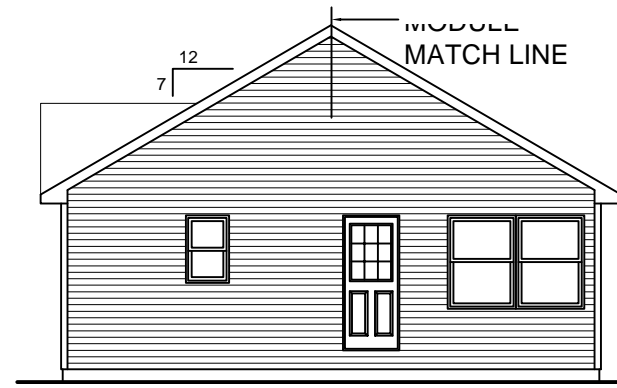
**BILL LAKE MODULAR HOMES**  
 188 FLANDERS ROAD  
 SPRAKERS, NY 12166  
 (518) 673 - 2424





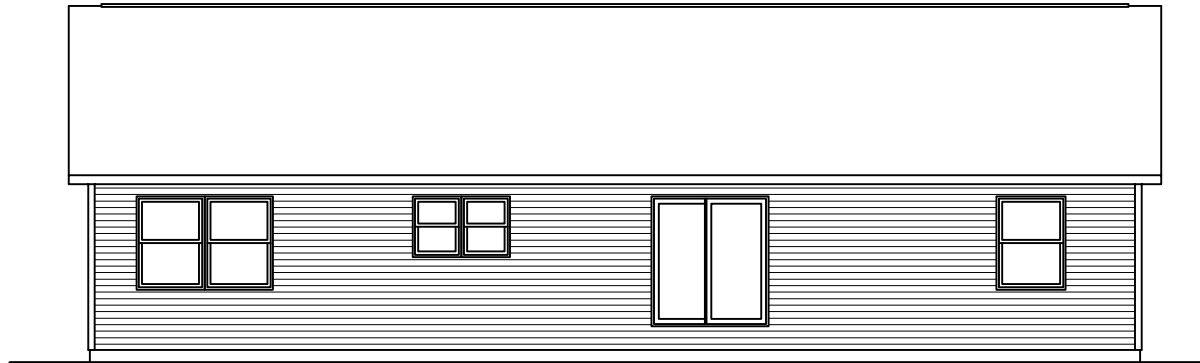
**LEFT SIDE ELEVATION**

SCALE: 1/8" = 1'-0"



**RIGHT SIDE ELEVATION**

SCALE: 1/8" = 1'-0"

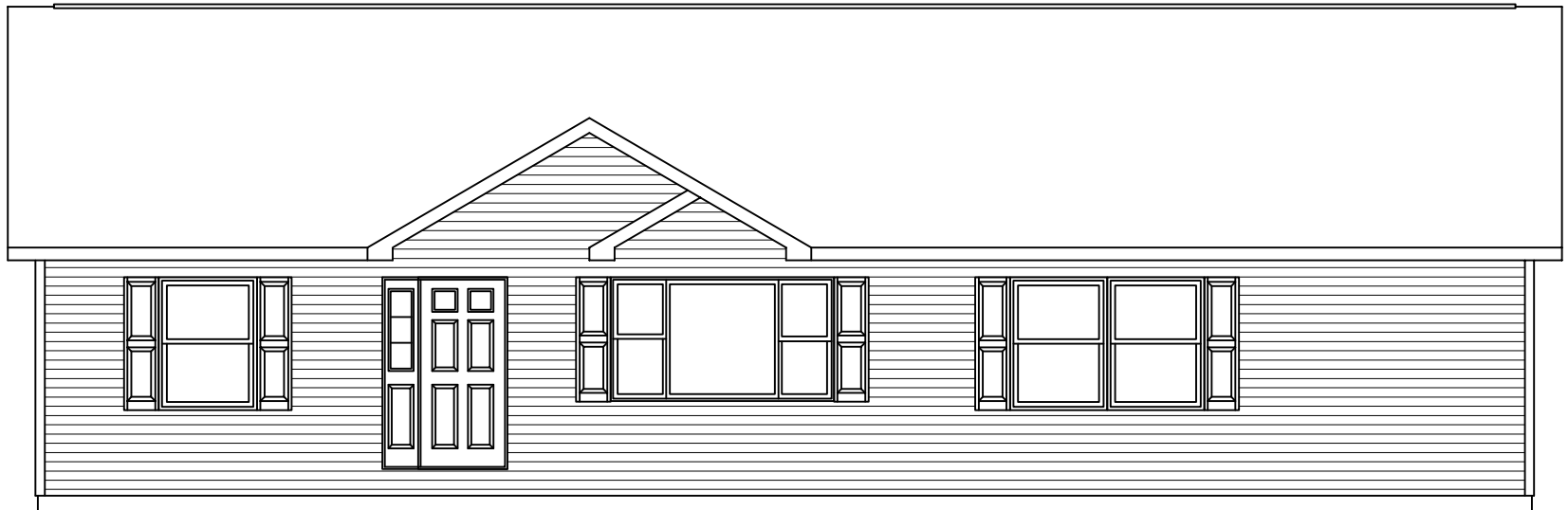


**REAR ELEVATION**

**REAR ELEVATION**

SCALE: 1/8" = 1'-0"

SOME ITEMS DEPICTED IN THESE DRAWINGS  
MAY BE OPTIONAL. PLEASE SEE SALES ORDER  
FOR EXTENT OF MATERIAL PROVIDED.



791

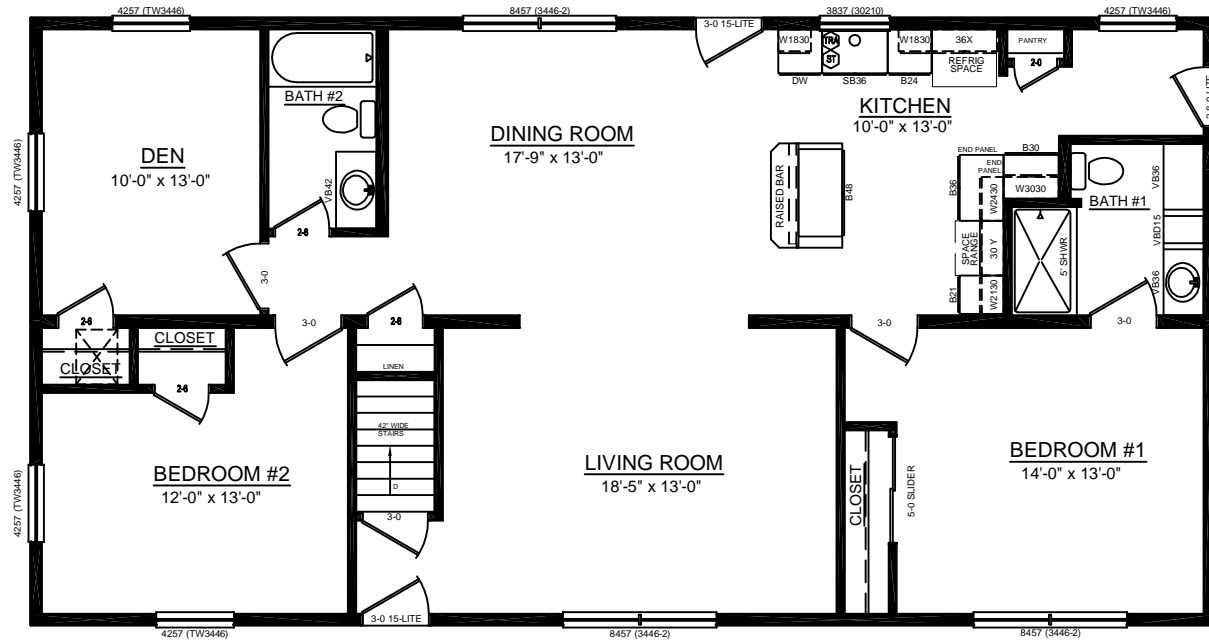
**FRONT ELEVATION**

SCALE: 3/16" = 1'-0"





FRONT ELEVATION



PLAN VIEW



REAR ELEVATION



LEFT ELEVATION



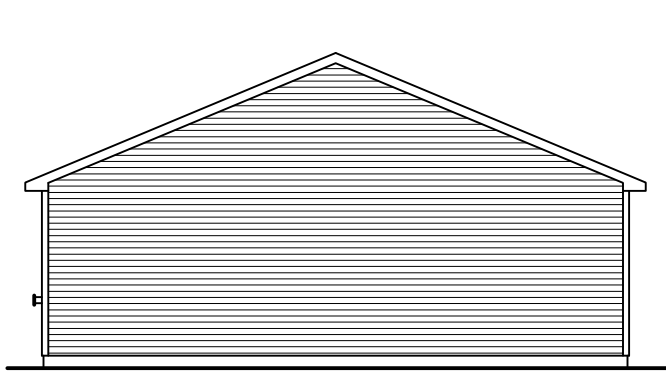
RIGHT ELEVATION

# CUSTOM RANCH 28 x 54

SOME ITEMS DEPICTED IN THESE DRAWINGS MAY BE OPTIONAL. PLEASE SEE SALES ORDER FOR EXTENT OF MATERIAL PROVIDED.

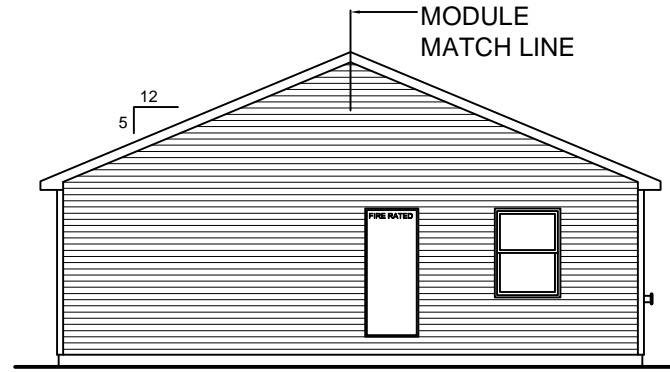
**BILL LAKE MODULAR HOMES**  
 188 FLANDERS ROAD  
 SPRAKERS, NY 12166  
 (518) 673 - 2424





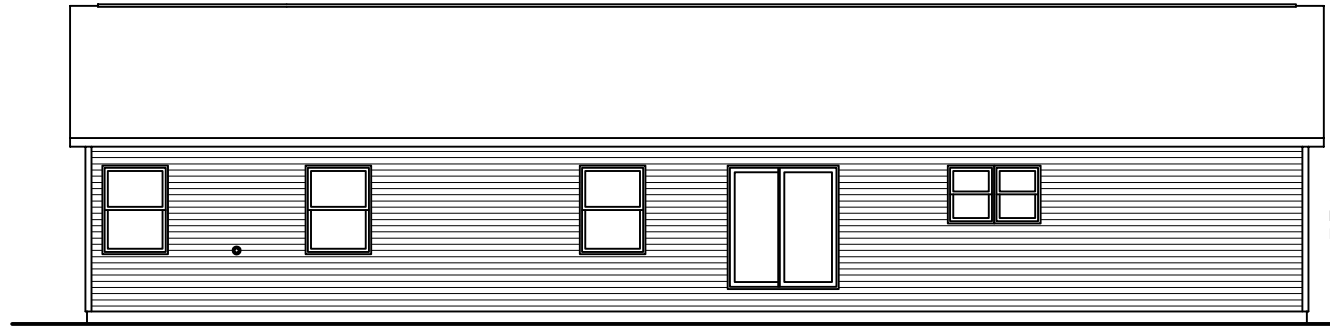
**LEFT SIDE ELEVATION**

SCALE: 1/8" = 1'-0"



**RIGHT SIDE ELEVATION**

SCALE: 1/8" = 1'-0"



**REAR ELEVATION**

SCALE: 1/8" = 1'-0"

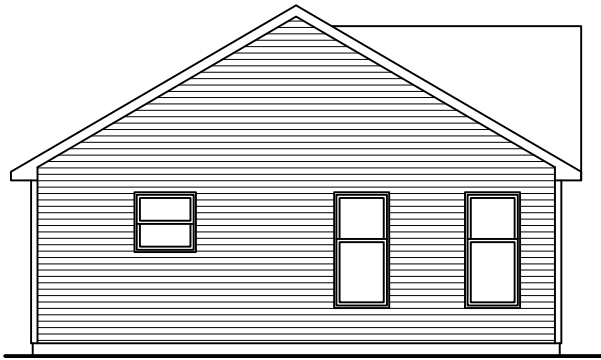
SOME ITEMS DEPICTED IN THESE DRAWINGS  
MAY BE OPTIONAL. PLEASE SEE SALES ORDER  
FOR EXTENT OF MATERIAL PROVIDED.



**FRONT ELEVATION**

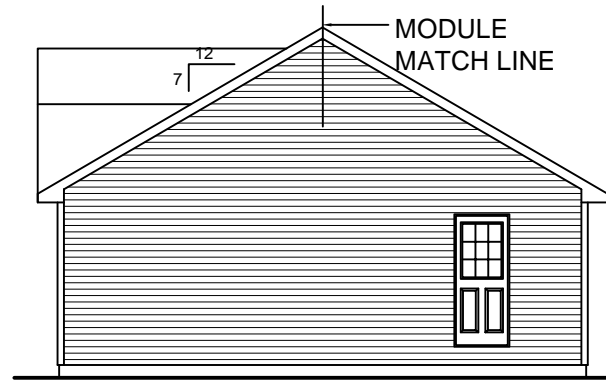
SCALE: 3/16" = 1'-0"





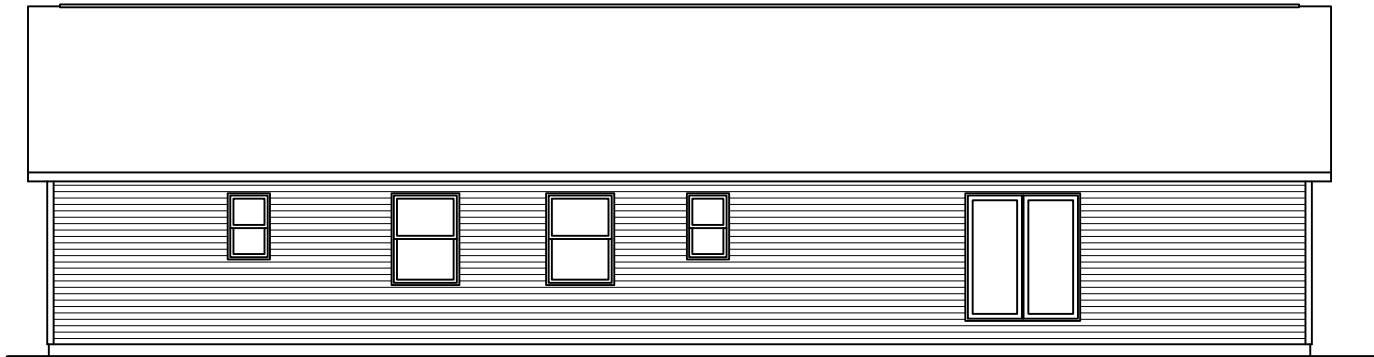
**LEFT SIDE ELEVATION**

SCALE: 1/8" = 1'-0"



**RIGHT SIDE ELEVATION**

SCALE: 1/8" = 1'-0"



**REAR ELEVATION**

SCALE: 1/8" = 1'-0"

SOME ITEMS DEPICTED IN THESE DRAWINGS  
MAY BE OPTIONAL. PLEASE SEE SALES ORDER  
FOR EXTENT OF MATERIAL PROVIDED.



**FRONT ELEVATION**

SCALE: 3/16" = 1'-0"

